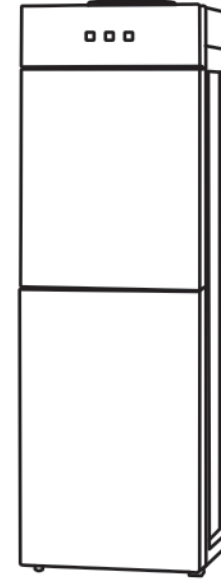


WATER DISPENSER USER'S MANUAL

Please read this manual carefully before use. Keep it for future reference

HC-36 GDG
HC-36 GDB
HC-37 GD
HC-39 GD
HC-40 GD



Super Asia
Customer care

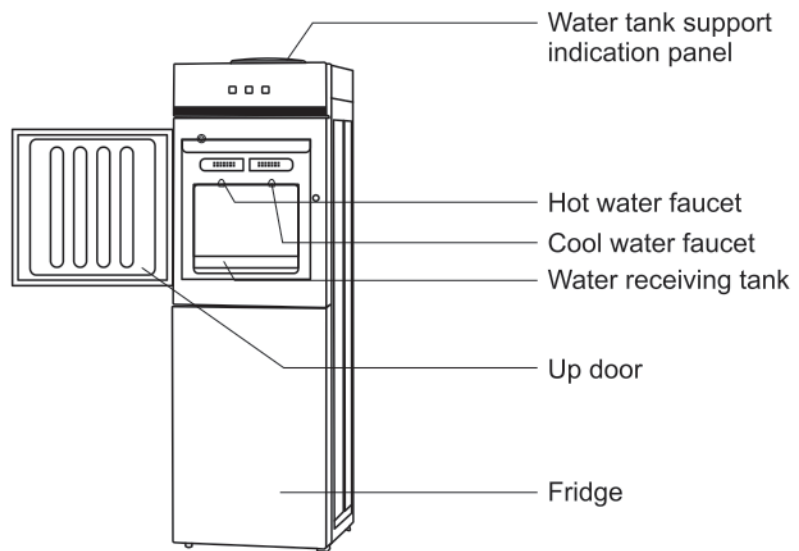
03-111-123-345
customercare.mds@superasia.biz

HEAD OFFICE
SUPER ASIA MDS LIMITED. | G.T. ROAD, GUJRANWALA, PAKISTAN. | Tel: 0092 55 4272801-5
www.superasiagroup.com

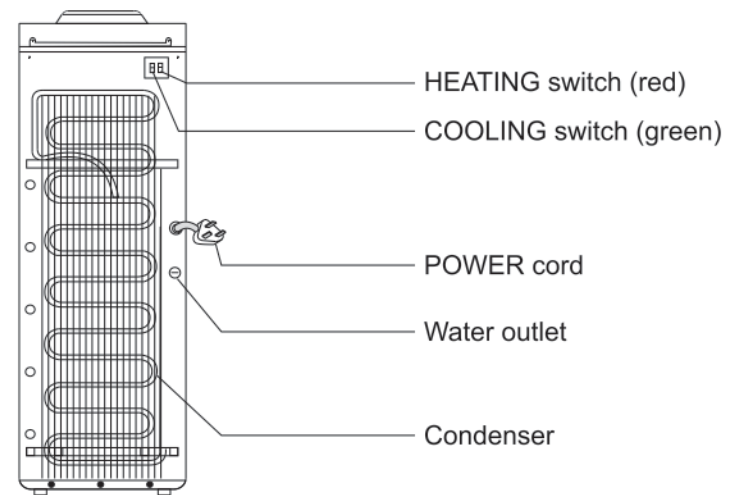
اعتبار پرنسل کا

SUPER asia®

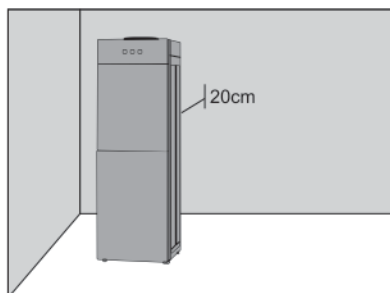
Part Name



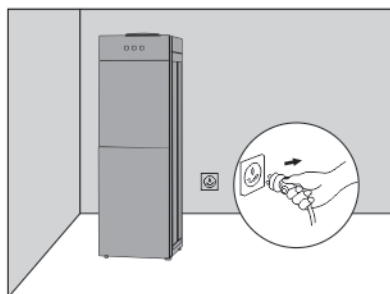
Director lights description on the indication panel



Attentions

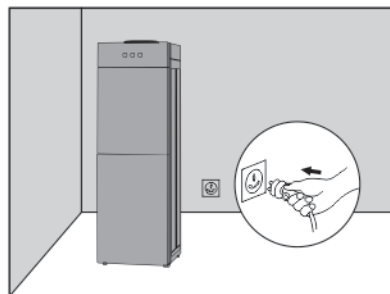


1. Put the unit on the stable flat surface in the cool dry room, escape from direct sun shine. Keep the unit at least 20cm away from the wall and not easy-burned articles near the dispenser. The unit is not fit for using at outdoor or the place with water spray.
2. Moving models with compressor can not be put up and down or slope to 45° for avoiding destruction or accident happening.



3. Long time no use, please pull out the plug and drain out the rest water. When the electric parts is working under 0 degree and cause ice jam, close cooling switch for 4 hours and then it can be opened for continuous working.
4. Do not start & stop the unit by inserting or pulling out the plug. Don't lengthen the power cord to avoid causing fire.

5. For avoiding dry operation to destroy the parts, please push the hot water faucet till the water flow out, then start the power and connect the heating switch.
6. Use three-core outlet earthing plug and operate reliable switch for leakage protection.
7. If no use hot and cool water for long time, please close the heating and cooling switch for power saving.



8. Do not clean the unit with gas oil or other organism solvent, do not wash the unit with water or spraying water. Please clean the dirt timely with spring water
9. When using purifying water tank, please check the connection between the unit and water tank, and the sealed condition of the tank, otherwise will cause water leakage.
10. Models with compressor shall be restarted 3 minutes later when the cooling switch is closed or power off.
11. The cooling temperature-controller has been adjusted, please don't adjust freely.
12. The power cords connected by Y frame, the cords shall be exchanged by manufacturer or professionals appointed when destroyed.

Function introduction

1. Cooling and heating function, manufacture cool water, it fits for 3-5 gallon water tank and purifying tank.
2. This water dispenser installed with 20 liters large capacity storage cabinet, and the support weight mainly reach 4kgs.
3. With top quality stainless steel, the inner tank is long lifespan and little water scale.
4. Integrative door design, more stable in performance.
5. Multiple zones design for storage cabinet, brings you more colorful life.

Usage steps

1. Tear off the labels on the water tank cover.
2. Insert the bottle in the tank support vertically. Push red hot water faucet till water flow out.
3. Connect with power and turn on the heating/cooling switch, the unit is on working condition.
4. When the unit is working, (Power, heating and cooling) the lights director will be in corresponding conditions (please see director lights description on the indication panel)
5. When the water is used out, please take out the tank vertically and exchange another tank of water.

Malfunction examination

The units are working well under the following conditions, the users may use them with no worriesL

1. It is normal to have some slight noise when the unit is heating.
2. When the hot water tank is heating without water, the dry-boiling protection device will be break and can not be reset except operated by professionals.
3. It is normal for slight noise when the compressor is work. Especially "kata" sounds when the compressor is started or closed.
4. The cooling speed may be slow when the ambient temperature is high.

Malfunction examination

No	Malfunctions	Reasons	Solutions
1	Unsuitable water temperature	1. Consume too much water in short time 2. No power	1. Wait a moment and take water 2. Connect the power and switch on
2	No water from water faucet	1. No water in tank 2. Hole was blocked up by tank cover paper	1. Exchange another tank of water 2. Get rid of waste paper, tear off the label on the tank cover and insert the tank
3	Water-leak from tank support	Water tank is broken	Exchange water tank
4	Big noise	The unit is not set flat and stable	Put the unit on the flat and stable surface
5	No water from cool water faucet	Ice jam	Close cooling switch for 4 hours

- Above is the judge and examination of usual malfunctions.
- Please don't open or maintain the unit by yourself for avoiding dangers.

Cleaning and maintenance

Remark: please cut off the power for following operation to avoid accident happening.

- The washing and water drainage method as:
Put the water tank into the support vertically, open the top, flow out 1 litre water and then take down the water tank. Take out the water stopple on the back or bottom of the unit. And drain out all of the rest water, then screw up the stopple, the unit may start to work.

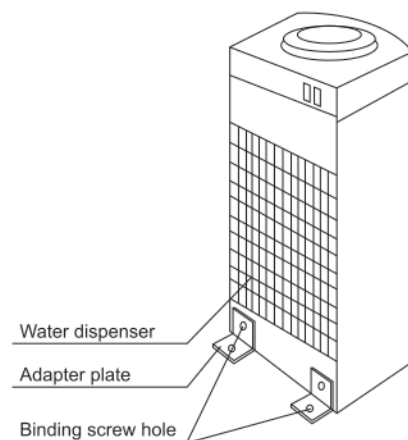
Attention: The temperature of the hot water tank is high, so operate carefully to avoid being burnt.

- Use the neutral daily use solvent to clean the unit surface with no friction. Attention to avoid water flowing into the unit.

Parameter list

Rated Voltage/Frequency	220V-240V~50/60Hz
Rated/Heating Power	610W/500W
Cooling Current	0.8A
Rated Heating Capacity	85-95°C 5L/h
Rated Cooling Capacity	4-12°C 2-3L/h
Refrigerant	R134a/50g
Climatic Class	T (relative humidity: ≤90%)
N.W./G.W.	18/19kg
Dimension	390x360x1100mm

Fixed device install instruction



If you want to fix the unit, please operate it as the following steps:

- Please discharge the screw on the left and right bottom according to the following indication.
- Use screw to rivet the two adapter plates to the left and right bottom of the water dispenser.
- Use screw to rivet the adapter plate to floor or tabletop on which the water dispenser is put.

